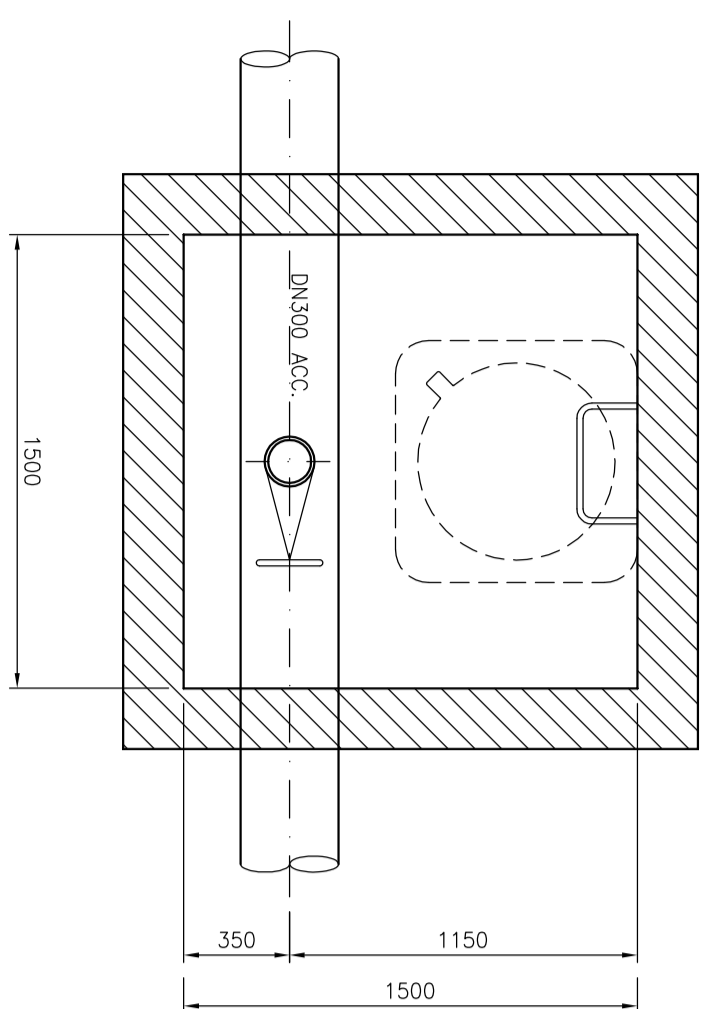
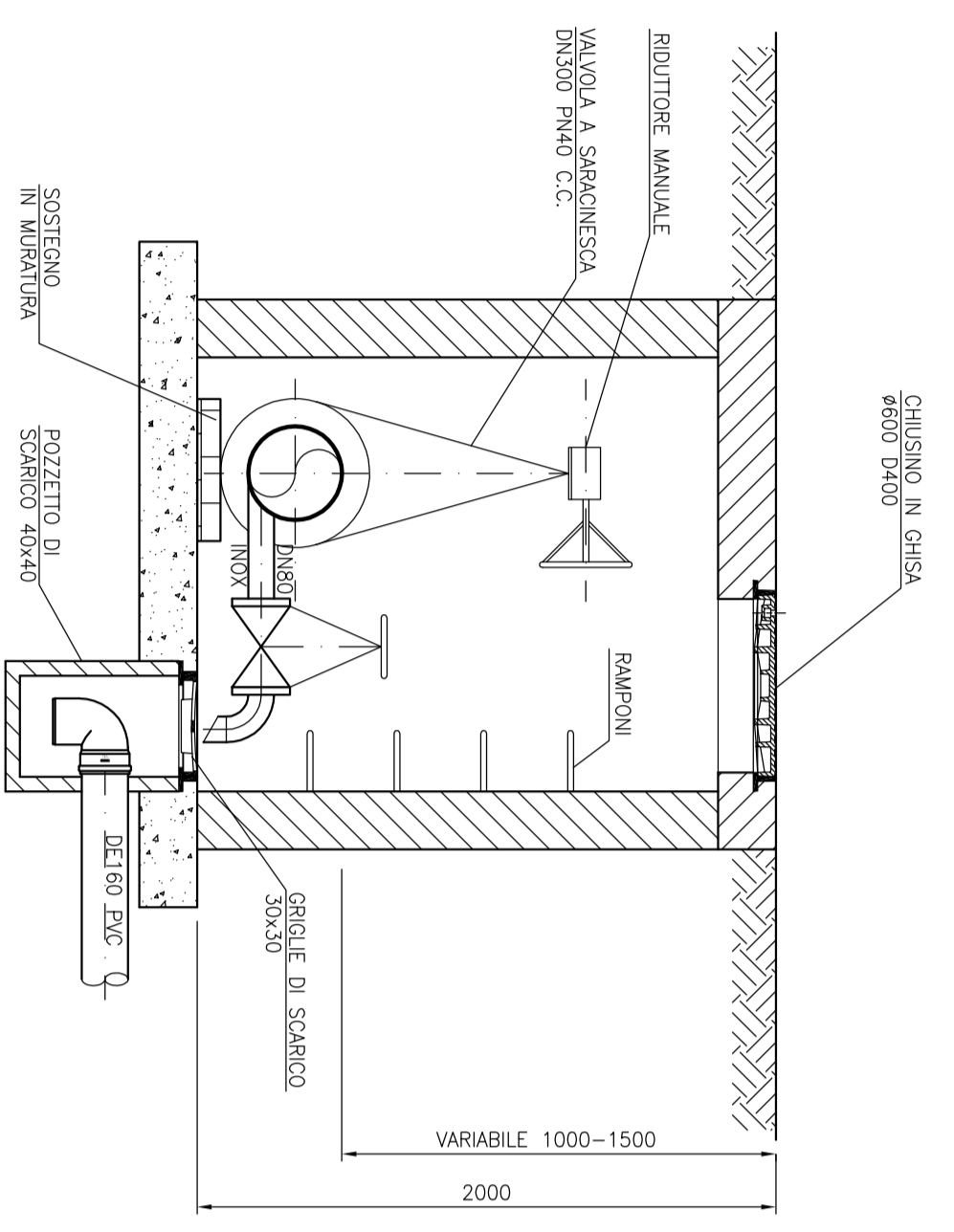
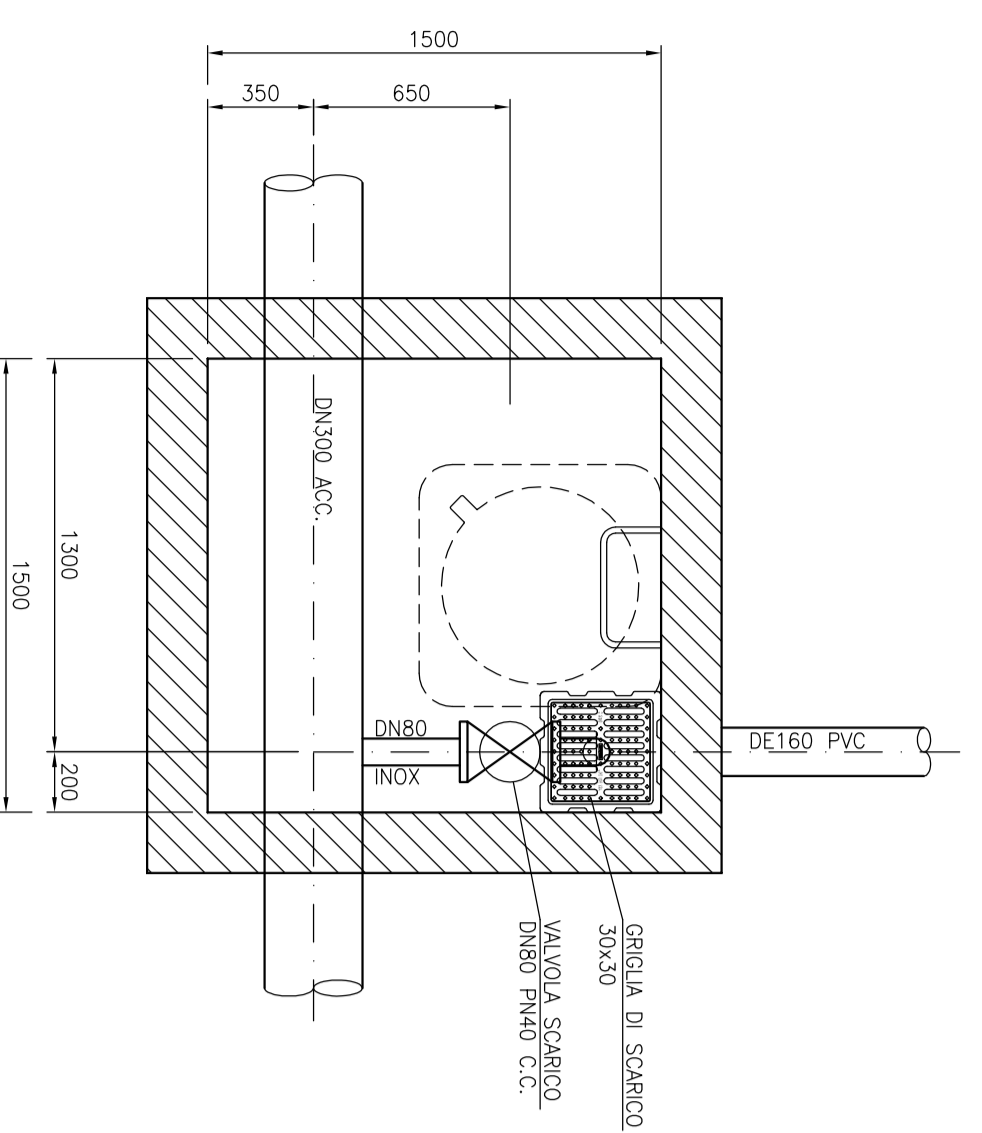
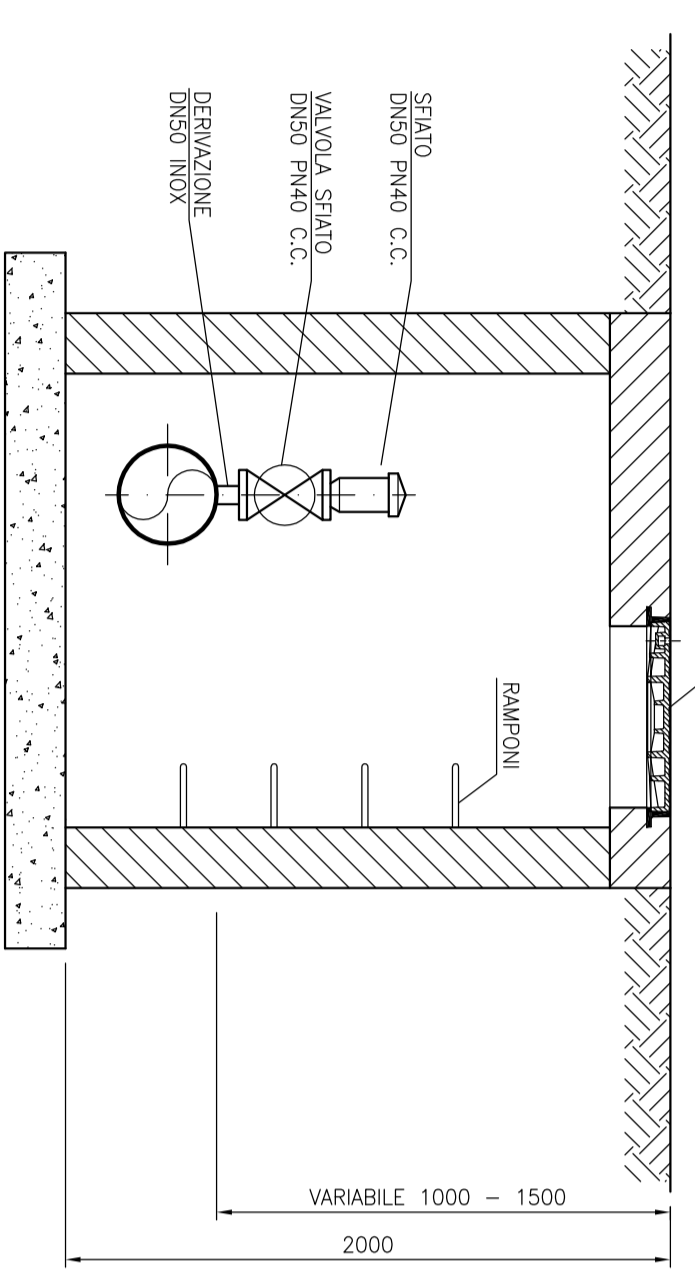


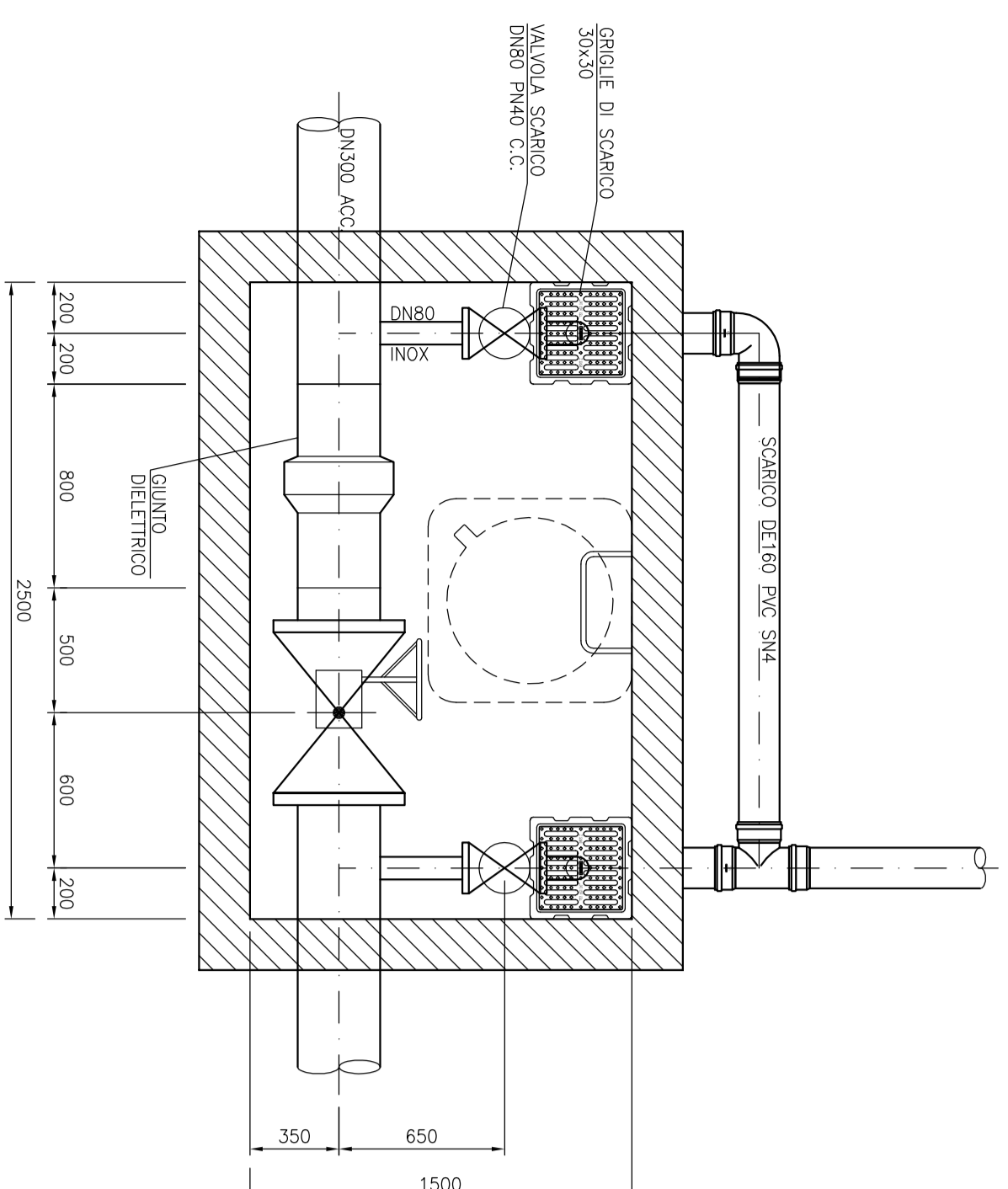
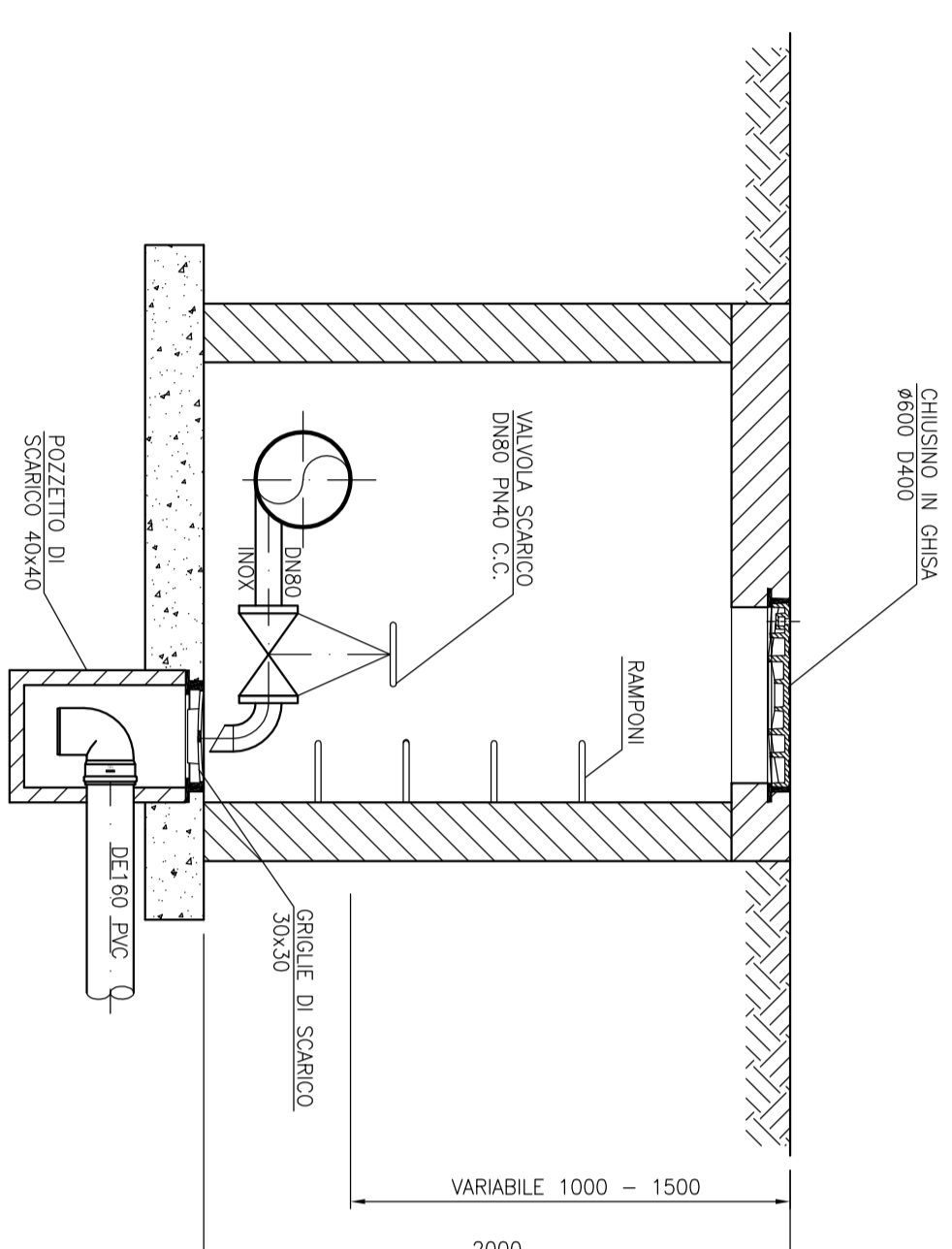
PARTICOLARI POZZETTO DOBPIO SCARICO CON VALVOIA DI LINEA E GIUNTO DIELETRICO
SCALA 1:25



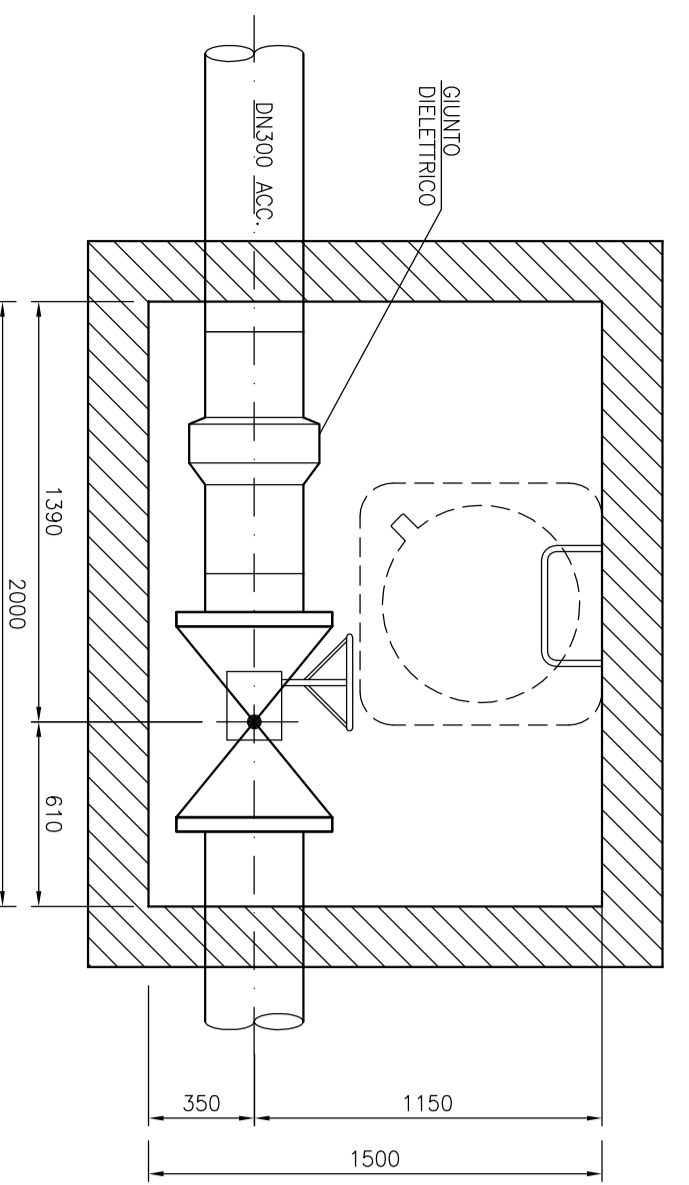
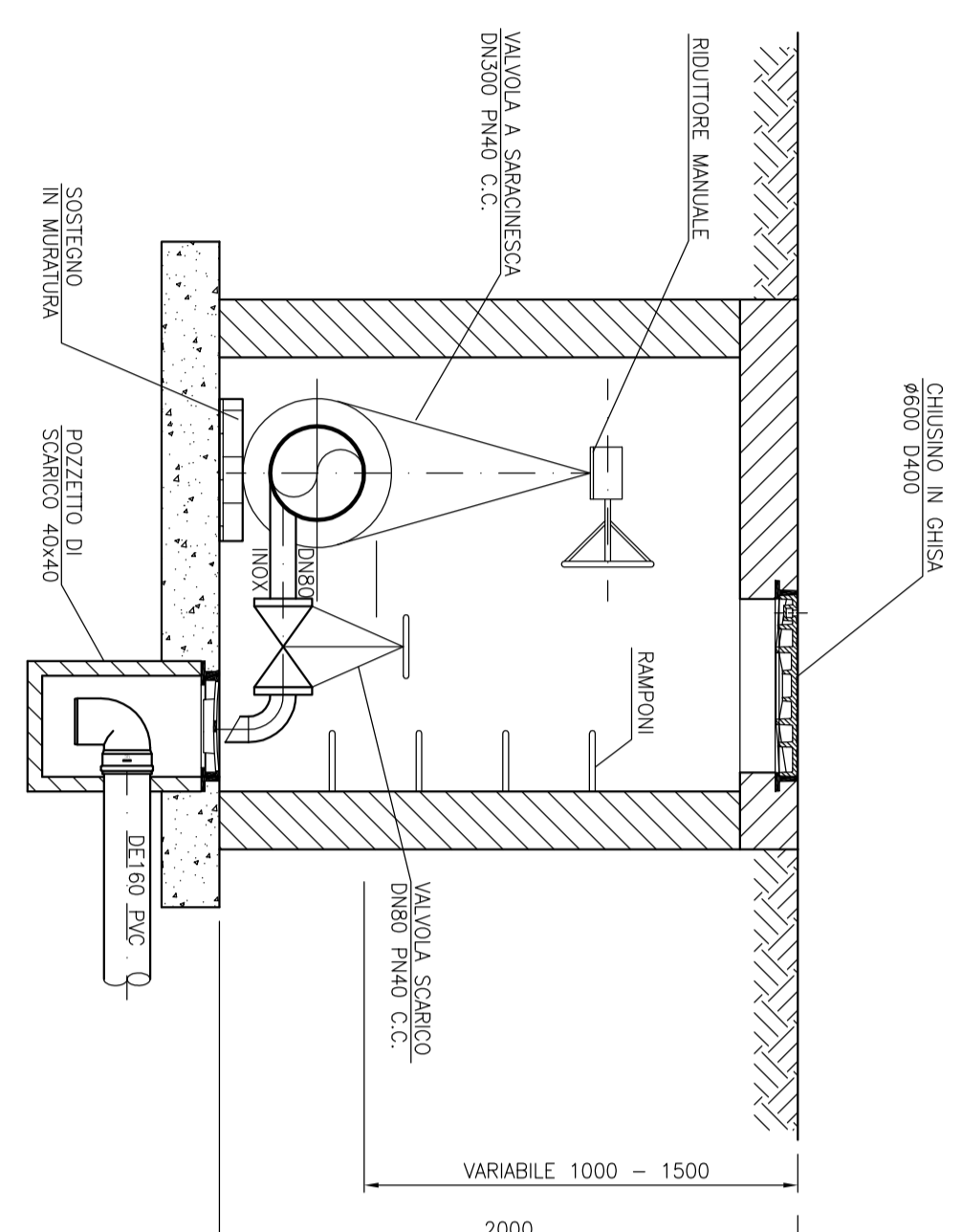
PARTICOLARI POZZETTO DI SPAIO
SCALA 1:25



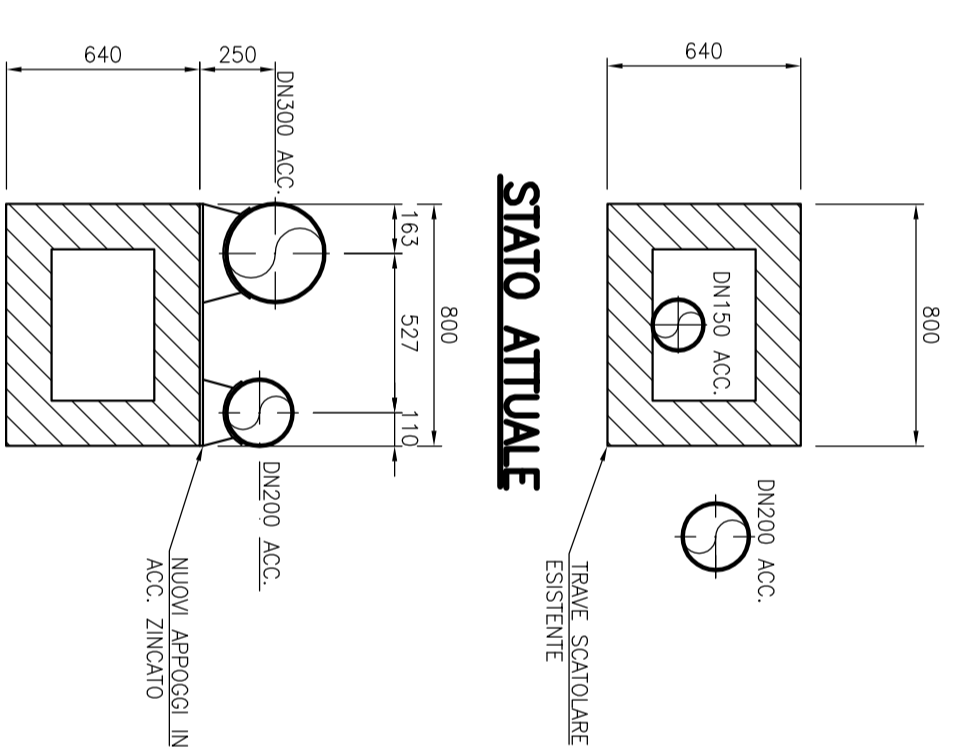
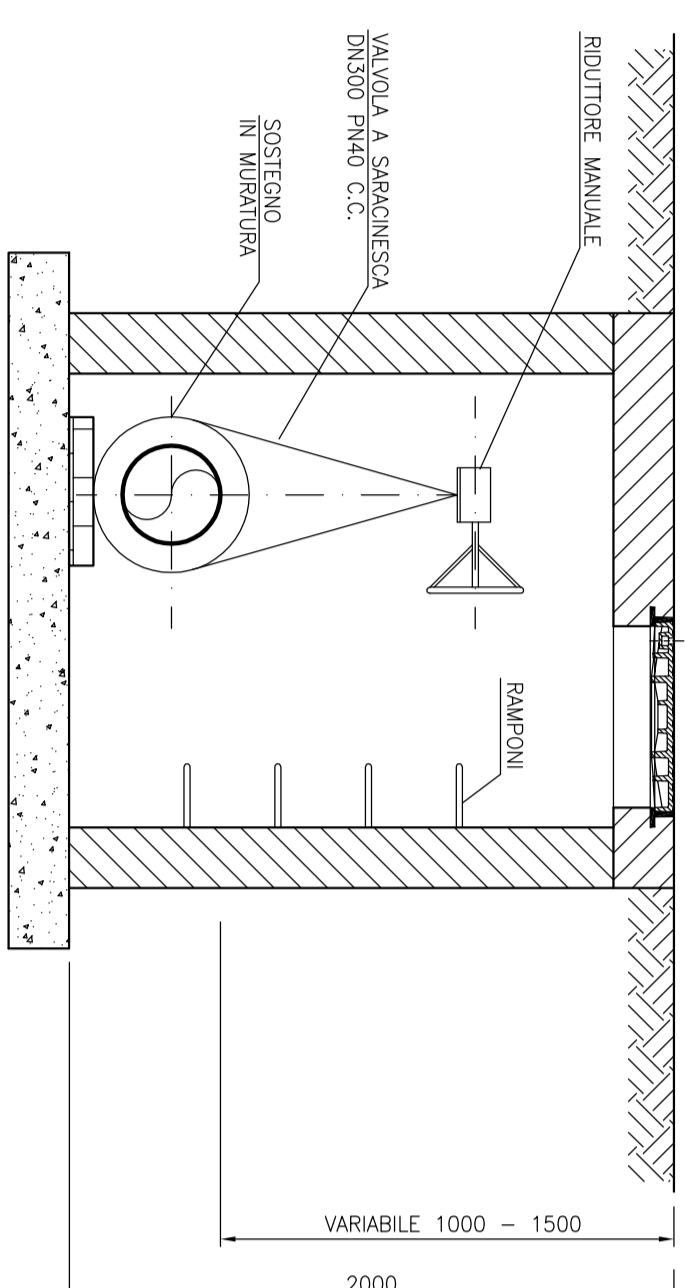
PARTICOLARI POZZETTO SCARICO SINGOLO
SCALA 1:25



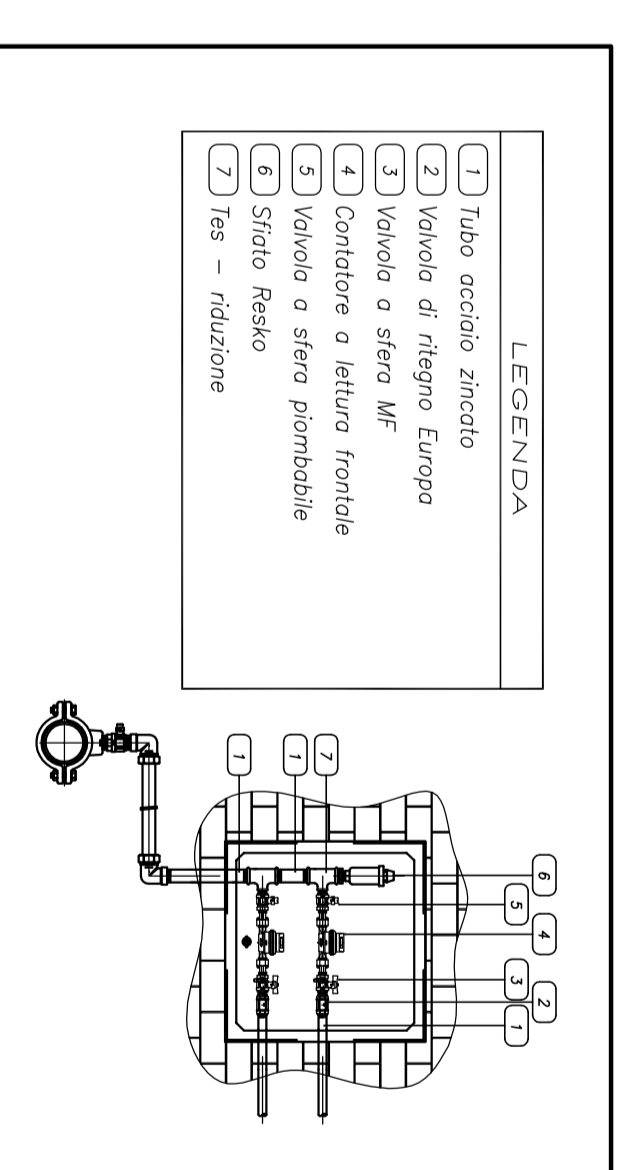
PARTICOLARI POZZETTO DOBPIO SCARICO CON VALVOIA DI LINEA E GIUNTO DIELETRICO
SCALA 1:25



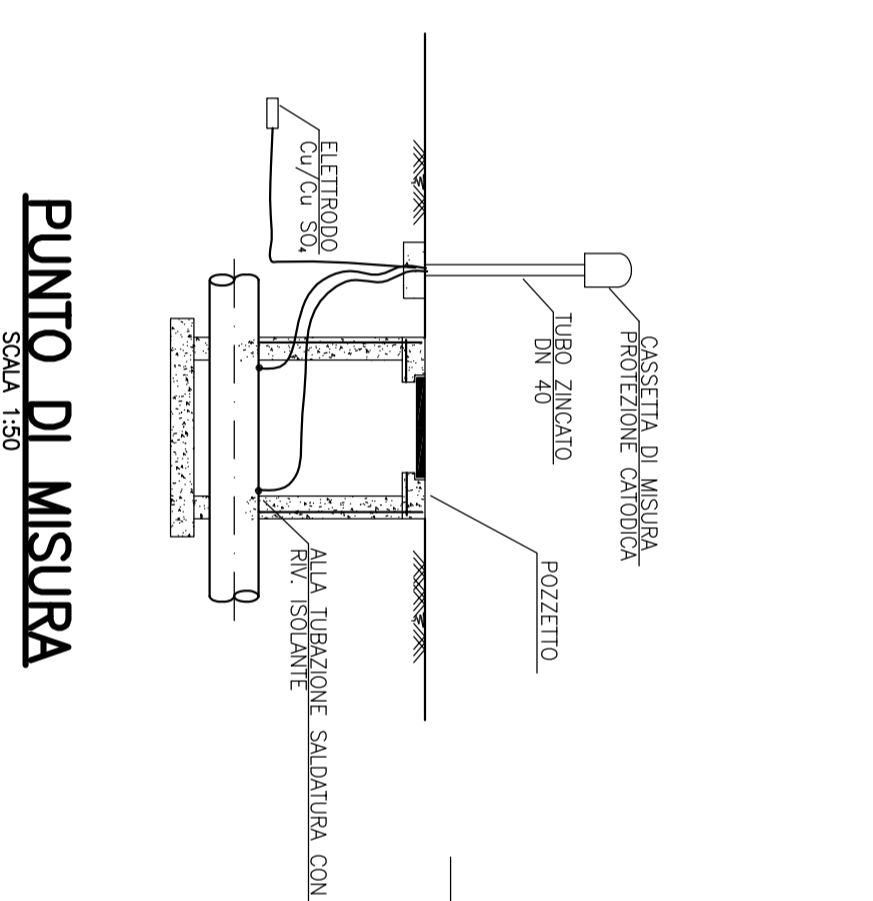
PARTICOLARI POZZETTO CON VALVOIA DI LINEA E GIUNTO DIELETRICO
SCALA 1:25



PARTICOLARI ATRAVESAMENTO BORTO TORBO
SCALA 1:25

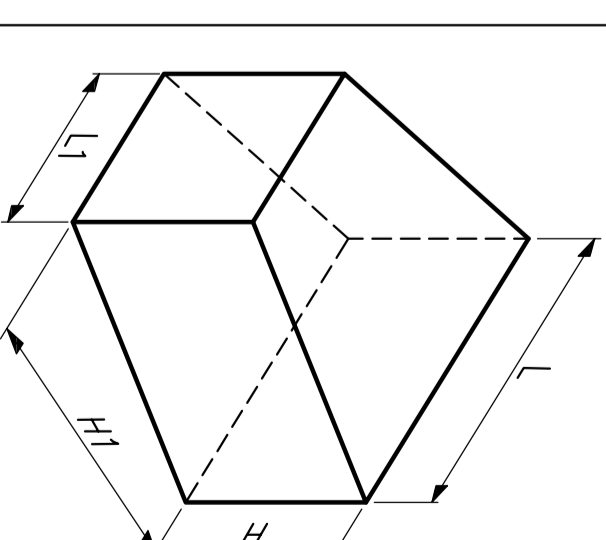
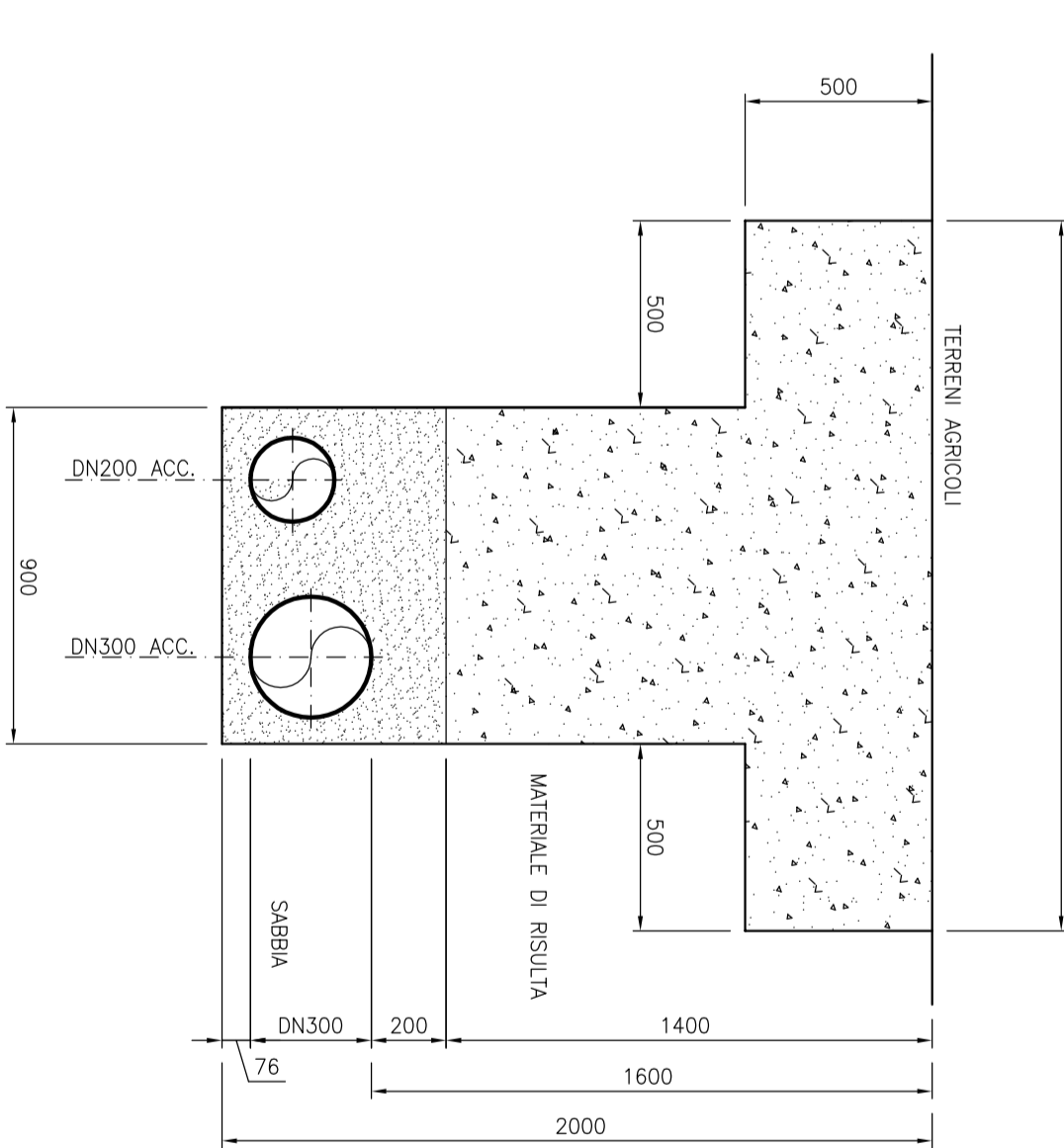
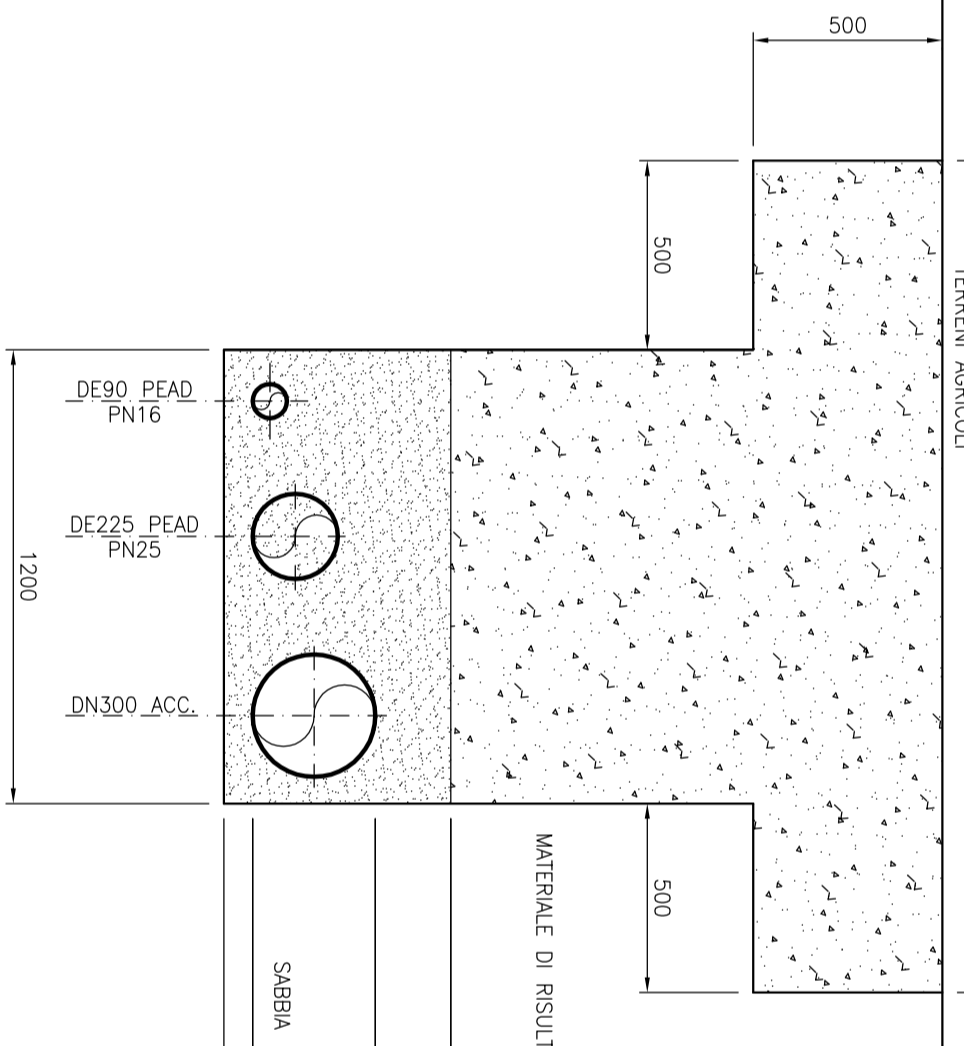
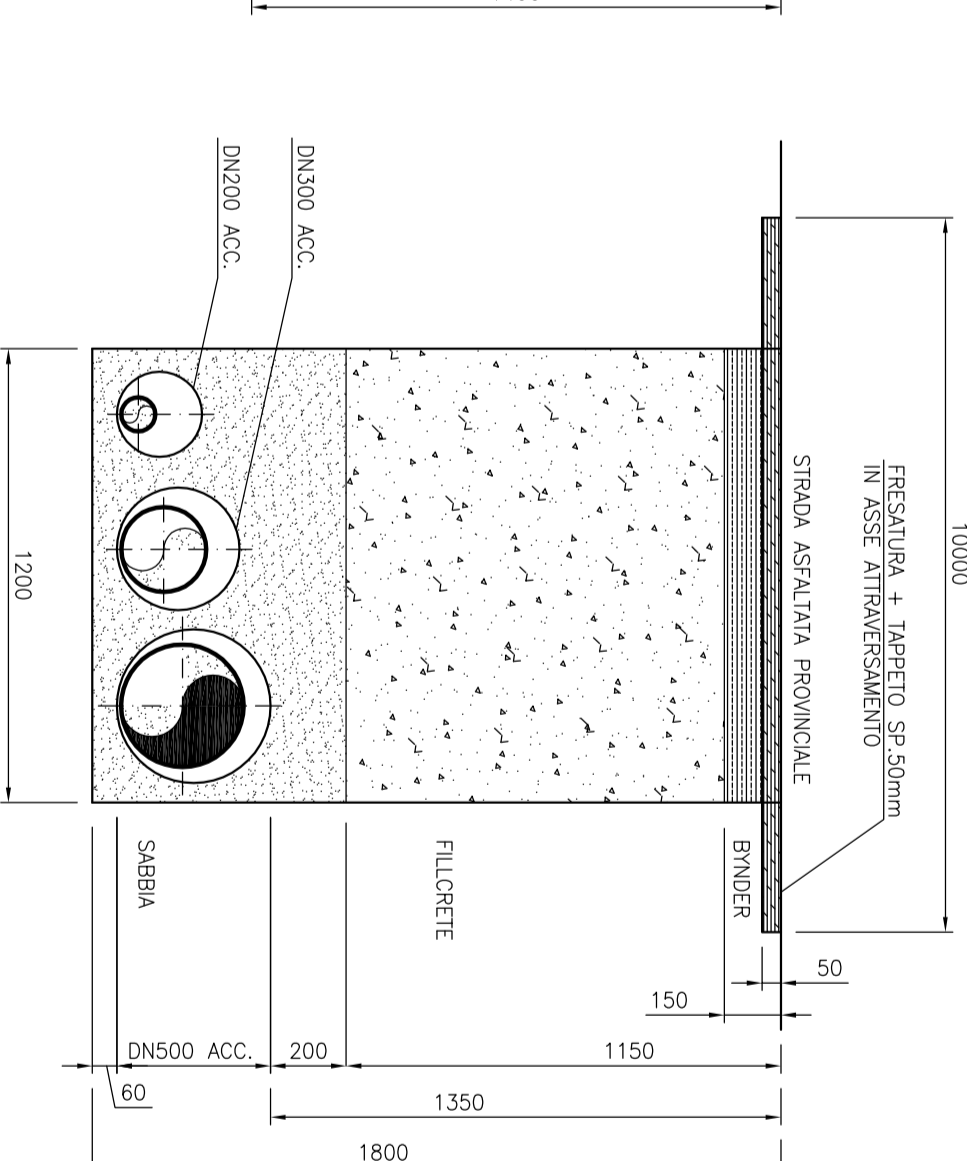
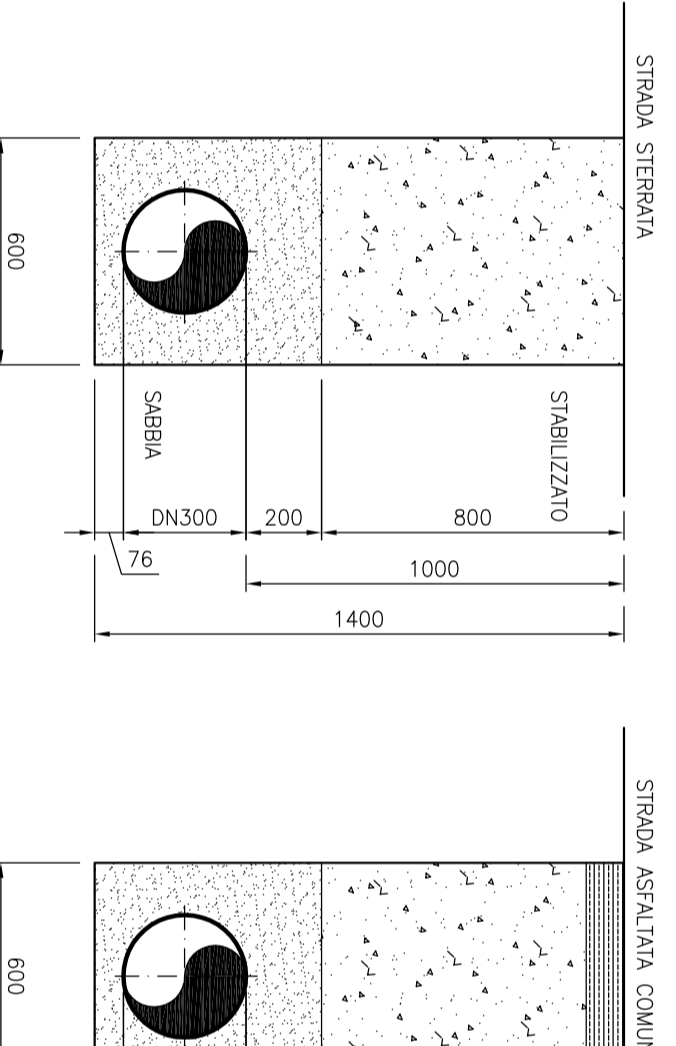
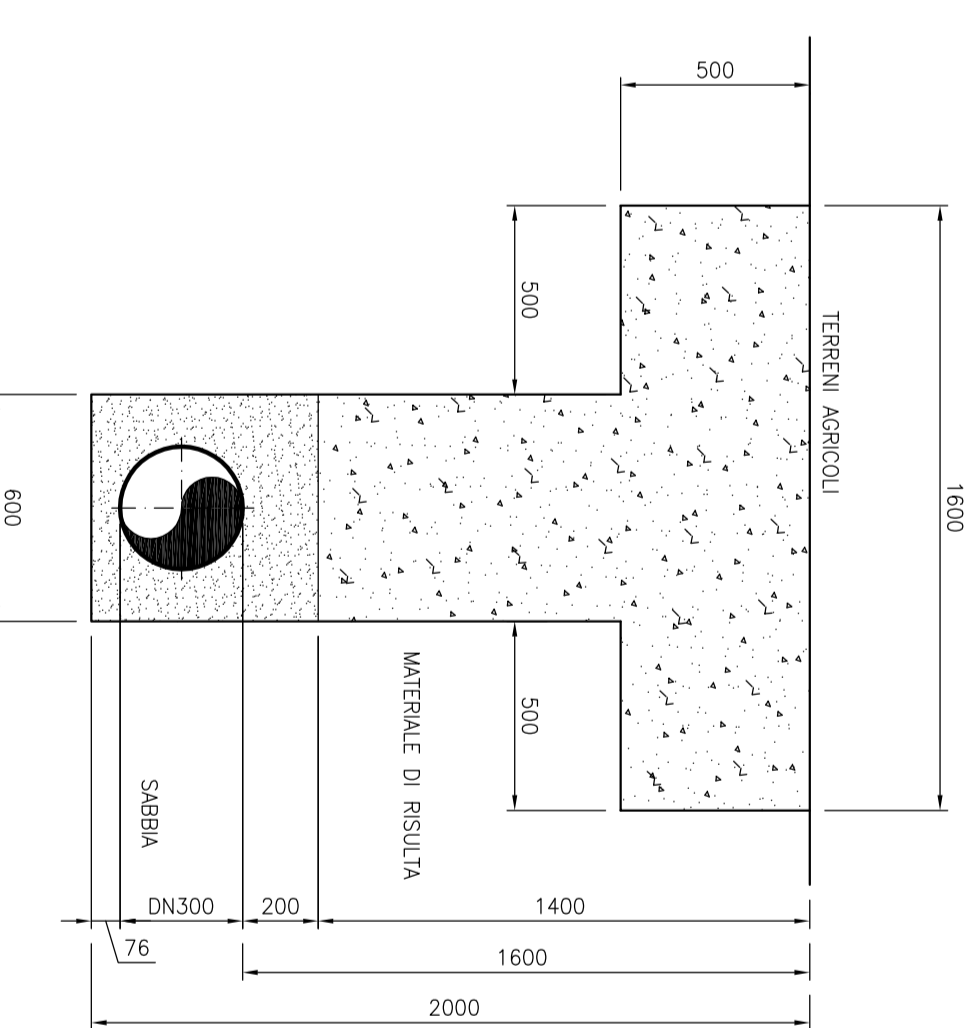
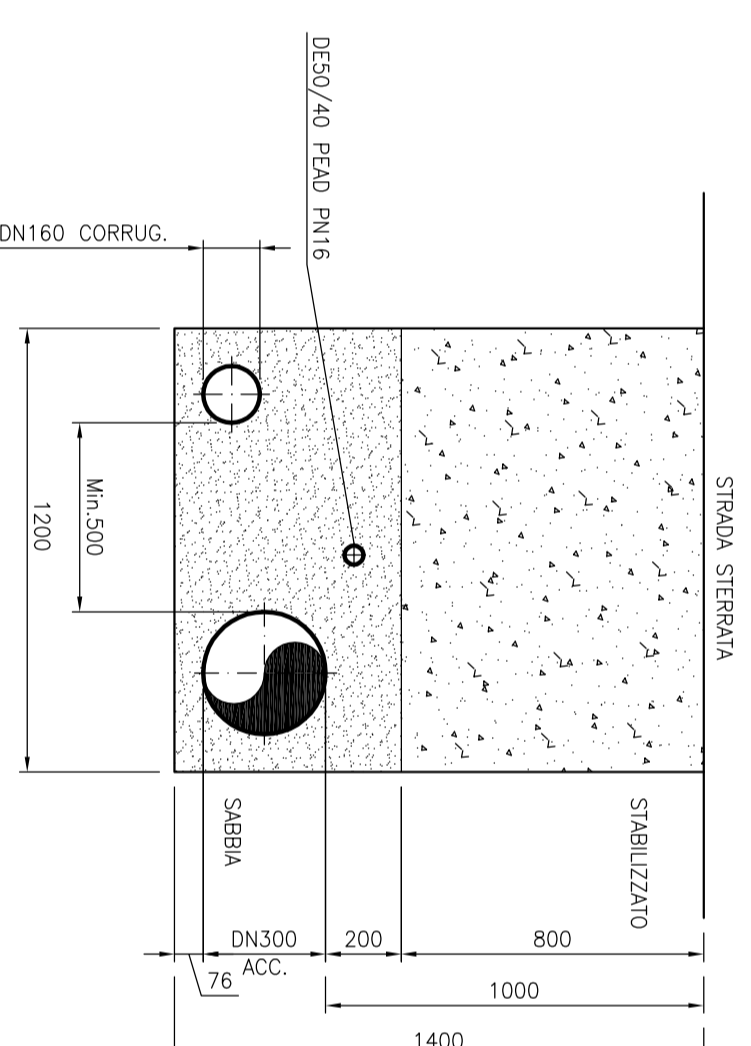


PARTICOLARI GRUPPO CONTATORI
TIPO SCALA 1:25



SCHEMA ALIMENTATORE CATTODICO PUNTI A-G-N

PARTICOLARI PROTEZIONE CATTODICA



DN 300 ACC. (25bot)						
TIPO	L	L1	H	H1	V	V1
OPERA	230	80	140	180	100	100
30	230	70	140	180	100	100
27*30"	120	50	75	100	0,65	0,65
11*15"	90	35	55	70	0,25	0,25
Dimensione	195	75	115	155	2,45	2,45
Estremo	195	75	115	155	2,45	2,45

TABELLA BLOCCHI DI ANCORAGGIO



Azienda Servizi Ambientali S.p.A.

Interconnessione acquedotti di adduzione tra alta e bassa val di cecina
Acquedotto Ponteginori - Saline - Volterra
Collegamento Saline - Volterra tra i serbatoi Cavallaro e S.Vincenzo

Particolari camarelle valvole
Sezioni di scavo
Protezione catodica
Blocchi di ancoraggio

N° Revisione	1	2	3	4	5	6	7	8
Data revisione	03/12/13	01/14						
Cod.Foglio	13-04-L1-A-V0		Cod.Opera		0086-403-400			
PC	Data: 20/03/13		CIC		AR301 Comm. AR0083			
L'Assistente Progettazione e D.L.		Il Responsabile del Progetto		Il Dirigente Programmazione e gestione investimenti		Ing. Fabrizio Pechi		
P.L. Emanuele Manelli		Ing. Marco Ruggiero						

PARTICOLARI SCAVI E RIPRISTINI
SCALA 1:25

PARTICOLARI SCAVI E RIPRISTINI
SCALA 1:25